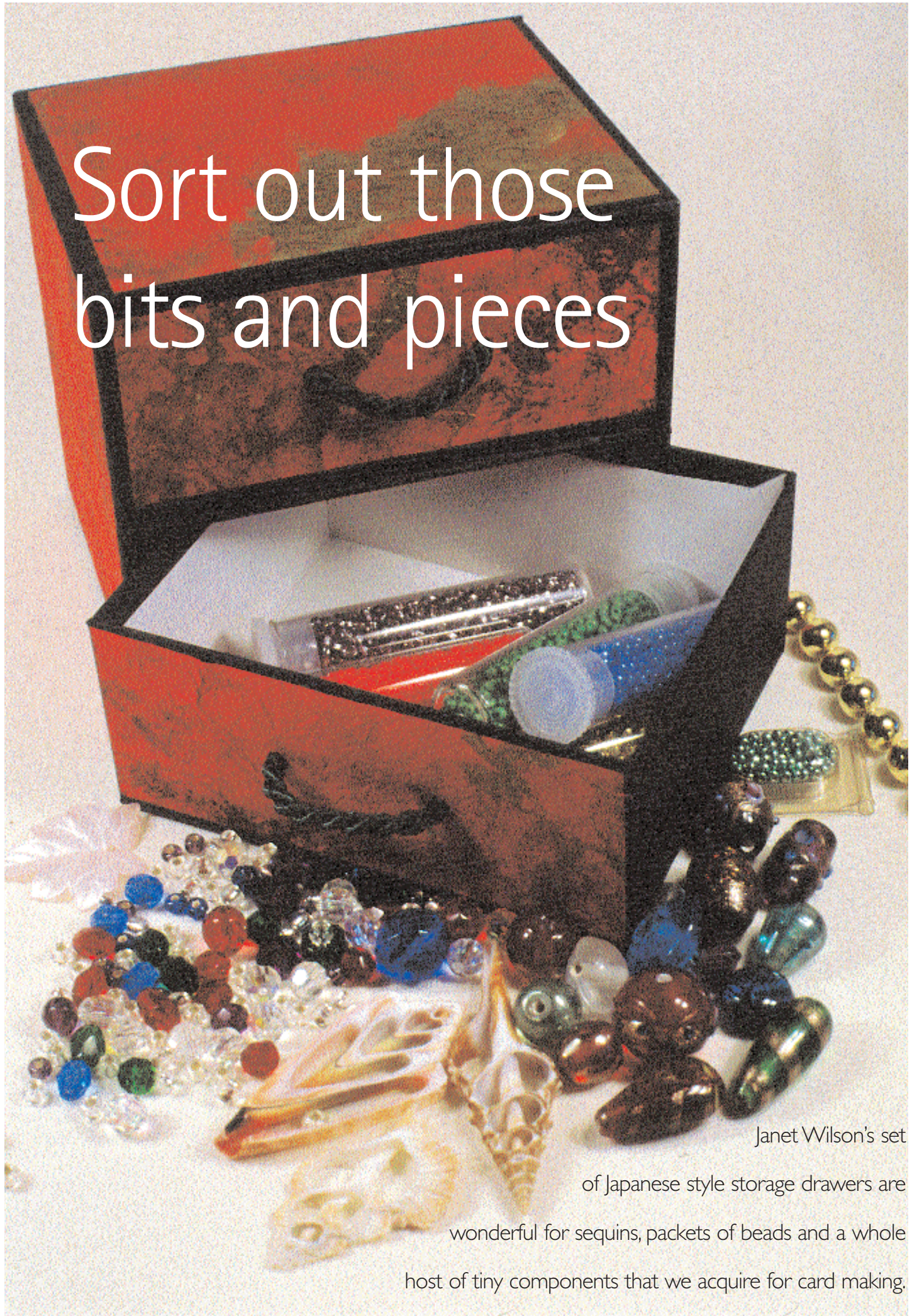


Sort out those bits and pieces



Janet Wilson's set of Japanese style storage drawers are wonderful for sequins, packets of beads and a whole host of tiny components that we acquire for card making.

I seem to be collecting an ever increasing amount of small articles. Every time I want to use them I have to hunt around or, even more frustrating, pick up the small box I've pushed them into and spill the contents all over the floor!

that any printing etc is on the OUTSIDE which gets covered with paper. Greyboard can also be used.

GET READY...

- 2 x A3 sheets of 300gsm card or greyboard (it can be made out of bits and pieces of card)
- 1 A3 and A4 sheet of 85gsm black craft paper
- 1 sheet of screen printed Thai paper
- About 1/4 metre of cord
- Crafter's Pick Memory Mount adhesive
- Sticky tape
- Scoring tool and needle tool
- 8in Fiskars hand punch
- Cutting board, cutting ruler and sharp scalpel/knife



Making the carcass

STEP 1
Copy the pattern given. Cut and score the carcass out of cardboard, piercing holes on drawer front with a file to indicate position. Some pieces are cut more than once, as directed on pattern.

STEP 2
Fold the top/back/bottom casing upright on the scored lines. Hold the two casing sides in place with 1 piece of sticky tape (see diagram).

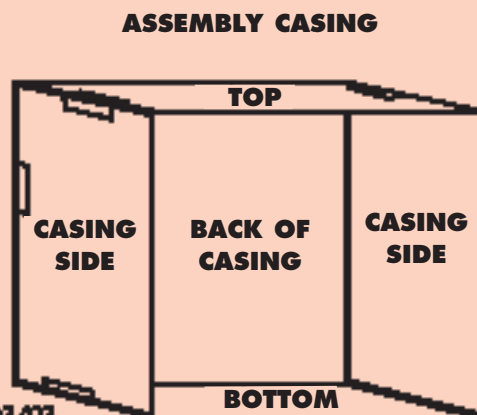
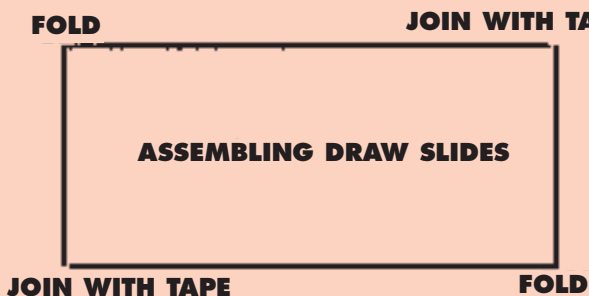
STEP 3
Fold each of the four drawer slides upright on the scored line. Take two of the slides and put one on top of the other so that you create a box slide shape. Use a small piece of sticky tape to hold one short side against long side of the other piece (see diagram). Assemble second drawer slide.

STEP 4
Click one slide on top of the other and slip into the top.

STEP 5
Fold drawer bottom and sides upright on the scored lines. Punch holes in the drawer front and then, using small pieces of sticky tape, attach the drawer back and front. Assemble second draw in the same manner.

other types of decorative paper, particularly that imported from Thailand, you can make this set without having to pay out a lot of cash.

For the carcass I used 350gsm white card that had some no longer required layout work on one side. So you can recycle material for this part - just make sure



Diagrams © Janet Wilson 03/03

Covering with black paper

STEP 6

Cut a piece of black paper 11.5x42cm and cover the top/bottom and sides of the casing, leaving an overhang of approximately 1.5cm at the front and back edge. Clip two slits either side of the slide into the front overhang paper and stick this tiny strip along the front edge of the slide.

Snip all the corners straight down from the overhang edge to the carcass. Fold the front edges over and glue into place. Fold the two side pieces over the back and glue into place. Cut a triangle off each corner of the two remaining edges of black paper, fold them over and glue to back of the casing.

STEP 7

Cut a piece of black paper 8.5x9.5cm and glue this into the middle of the back casing.

STEP 8

Cut a piece of black paper 3.5x9.7cm, fold it over the centre slide and then glue into position.

STEP 9

Cut a piece of black paper 38x6cm and glue this around the outside of one of the drawers so that it joins at the back. Leave an overhang on each long edge. Clip the corners in the same manner as for the casing, fold the paper over and glue to inside and bottom of the drawer.

Cut a piece of black paper 9x7.5cm and glue this centrally onto the outside base of the drawer. Repeat covering for the other drawer.

Attaching the Thai paper

STEP 10

Cut the following pieces and glue into place. Top of casing 9.4 x 8.1cm; back of casing 9.4 x 8.7cm; side of casing 8.1 x 8.6cm (cut two); drawer fronts 3.7 x 9.4cm (cut two).

Finishing

STEP 11

Turning the drawer so that you can see the punch holes, re-align the punch over them and punch through the black and coloured paper covering.

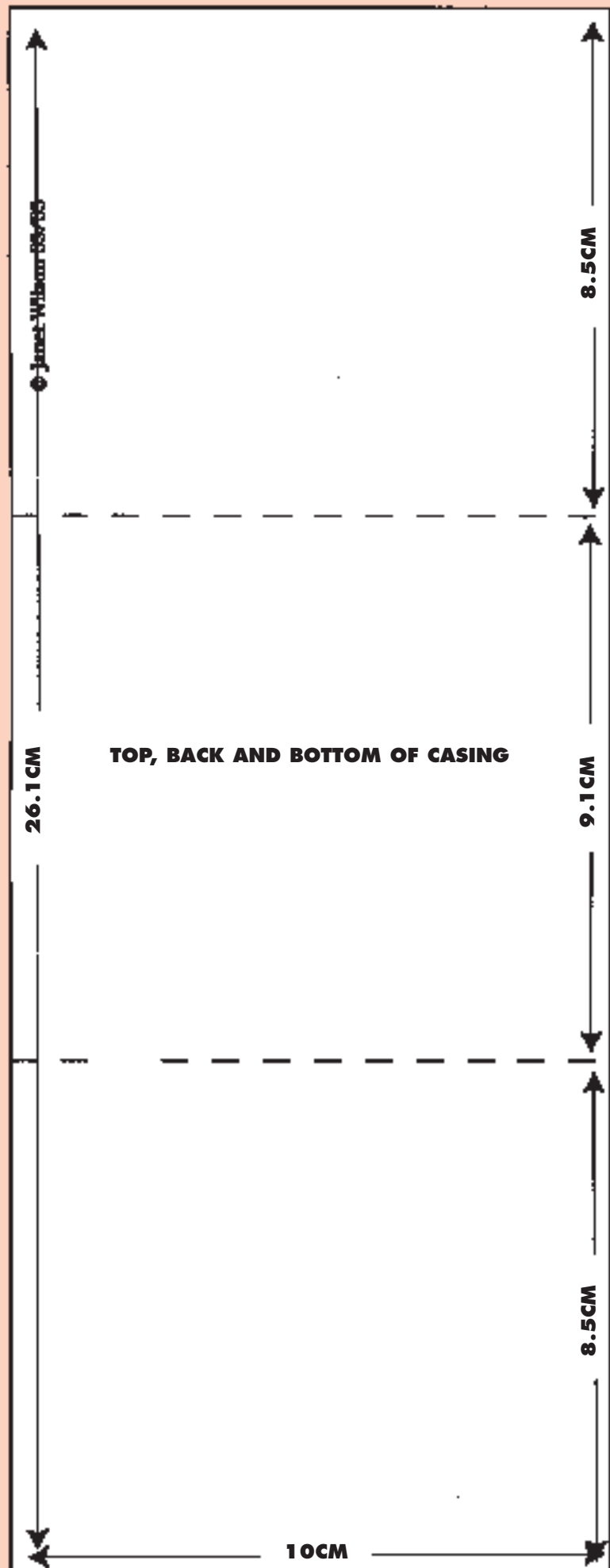
STEP 12

Cut the cord into two pieces. Thread the end of one piece through one of the holes in the drawer (be patient – it will go through if you twist the cord). Pull enough through so that you can make a knot on the end. Pull the cord from the front so that the knot sits snugly behind the drawer front. Thread the other end through the other hole and repeat the knotting process. Snip off the excess cord close to the knot.

TIP: When making the knot on the second end of the cord do not tighten immediately. Slip a strong needle into the knot, slide it up to the card and then pull tight.

STEP 13

Repeat for the other drawer.



Source

Card, greyboard, black paper and fancy papers should be widely available from art and craft shops. In case of difficulty the following offer mail order service: Thai screened papers of all colours and patterns - L J Gibbs and Partners Ltd (Tel: 01959 533663). Black craft paper, 300gsm card and greyboard - Centagraph (Tel: 01423 566327).

