

Technique guides

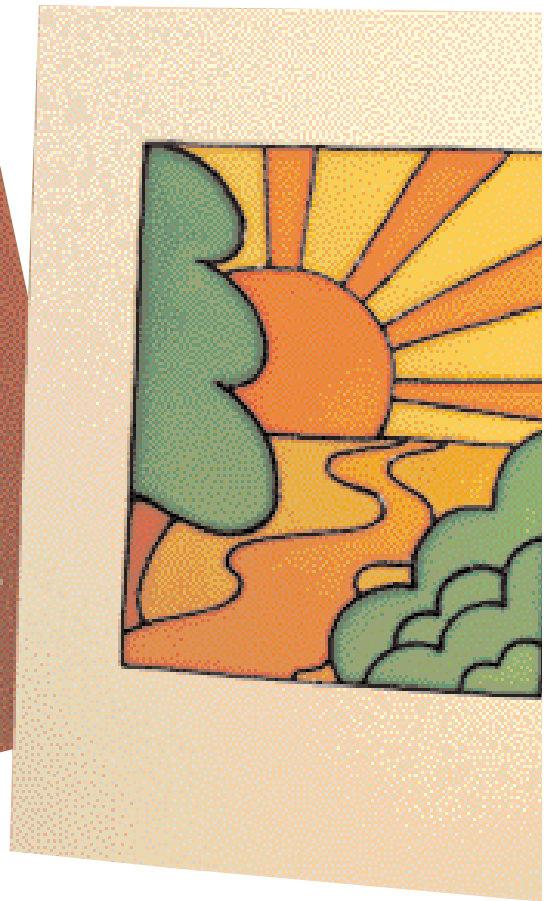
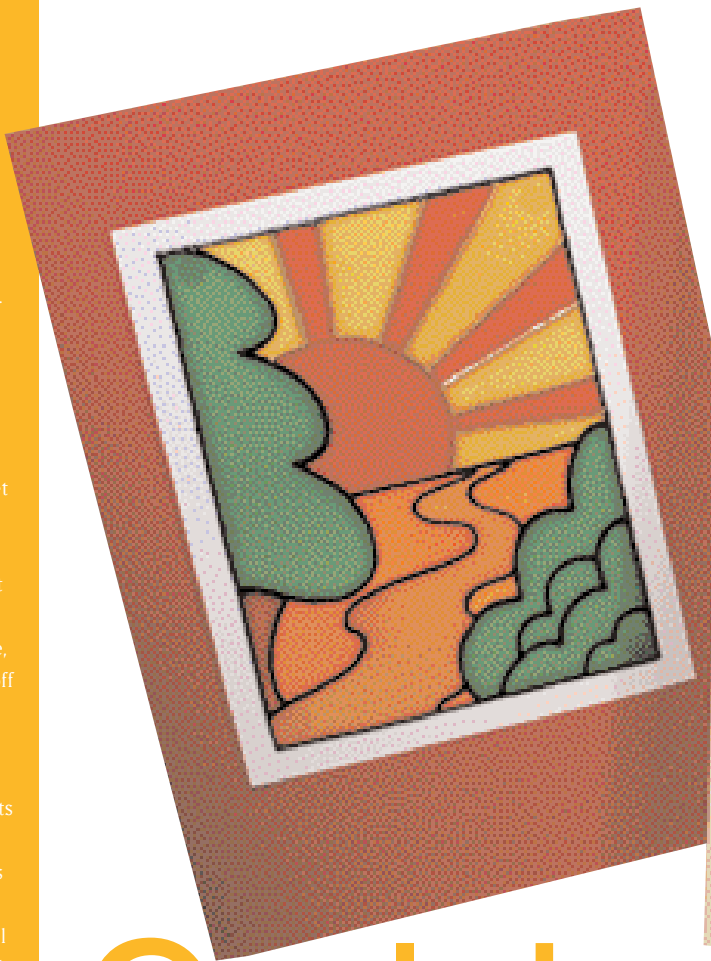
Using the cerne relief outliner, hold the tube as you would a pen and place the nozzle onto the acetate. Follow the lines at the same time gently squeezing the tube. Feel free to break a line at any point. Before putting the nozzle back onto the acetate, wipe the end with a piece of kitchen roll, this will stop any blobs forming. Check to see that there are no gaps where any of the lines meet and if there are gently apply more outliner. The raised lines act as a barrier to stop the paint running into an area you do not intend it to. If a mistake is made, leave to dry and gently scrape off with a fingernail.

Painting

As these are solvent-based paints it is best to work in a ventilated room. The colour in the bottle is very intense so to lighten, mix with lightener medium in a small plastic palette until the required depth of colour is achieved. Load a brush with paint and drop into the middle of the colour segment that is to be filled, pushing gently towards the raised line, adding more paint as necessary to achieve a solid layer. Leave each colour segment to dry for about 30 minutes before painting an adjoining colour. This will give the paint time to dry slightly so that it does not accidentally run into the next colour. Clean the brush and palette with thinner.

Hints and ideas

Remember when signing the aperture card to sign below the window on the inside so that your message will not show through and spoil the design when the card is closed. Mount the design in a pale cream aperture card and close as normal. Water-based glass paints can easily be substituted for solvent based ones. Paint the design onto a piece of glass and hang in the window as a suncatcher. This design could also be painted on silk with silk paints and then mounted onto a card.



Golden glow

GO

1 Place acetate over design and hold in place with a little masking tape. Trace the design using the cerne relief outliner as indicated in the techniques guide. Leave to dry for 30 minutes.

2 Place the outlined acetate onto a piece of white paper, this will help to see that the paint has spread fully to the edge of the outliner.

Red and gold sun card

1 Outline the design in black cerne relief except for the sun and rays, which are outlined in gold.

2 Paint sun and alternate rays in lightened crimson with the remaining rays in lightened lemon. The land is lightened orange, the path lightened yellow. The greenery is lightened chartreuse with the trunk of the tree orange. Leave to dry for 24 hours.

3 Cut around the design close to its edge. Place a small dot of silicone glue onto the reverse of the design in each of the four corners and mount onto a slightly larger piece of white card. Mount this onto the front of a red single-fold card.

Orange sun card

1 Outline the whole design in black cerne relief.

2 Paint the sun and alternate rays in lightened orange with the remaining rays in lightened lemon. The land is lightened lemon and the path is lightened yellow. The greenery is lightened chartreuse with an orange trunk. Leave to dry for 24 hours.

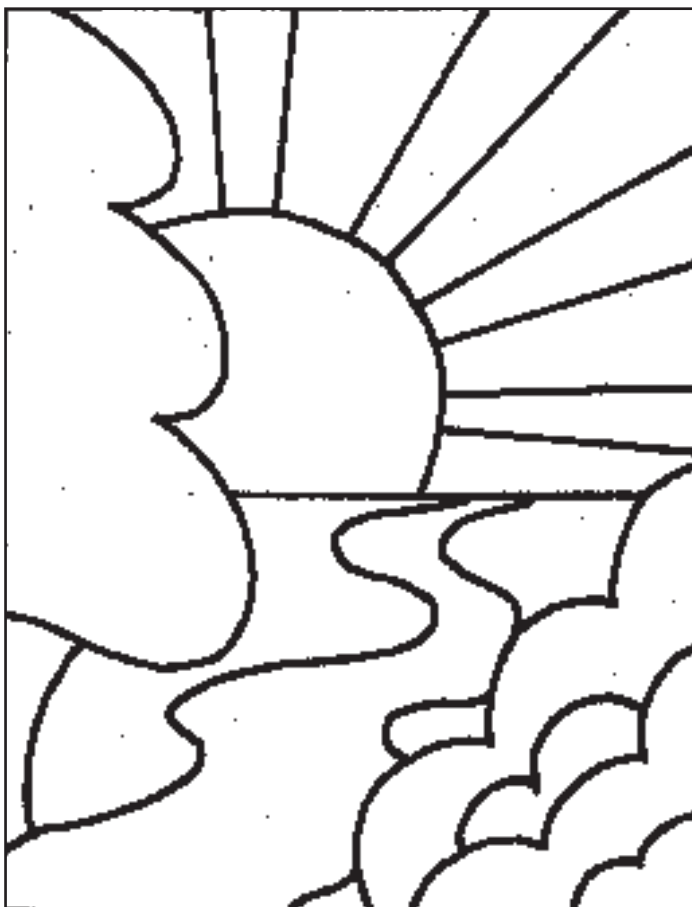


These glass painted cards, which can be used for any occasion, are designed with the Clarice Cliffe colours and style in mind. Either mount onto a single fold card or make the card self-standing so that the design can stand in a window to catch the light and show itself in its glorious colours.

3 Cut around the design leaving a 1cm border all round. Place double-sided tape around the edge of the opening of an aperture card. Remove the backing tape and gently lower the design onto the tape, painted side down.

4 Spread some silicone glue on the wrong side of the middle segment and place a white aperture card exactly over the top of the red to sandwich the design between the two cards, leaving the two side pieces free.

5 Draw a vertical line in the centre of each flap either side of the design and cut through both layers on the pencil line. Fold the card, white side inwards so that it will stand up. Place near a window in the sun or underneath a lit table lamp for the full glorious effect. **Mc**



TECHNIQUE:

Glass painting

SKILL LEVEL:

Moderate ●●○

MAKE IT

in a weekend

CREATED BY

Linda Cash

GET READY...

- ✓ Acetate sheet 12 x 15cm for each card
- ✓ One each orange and white aperture card (AP48U)
- ✓ One deep red single fold card (SFO1U)
- ✓ Pébéo Vitrail glass paint in the following colours: Lemon (23), Yellow (14), Orange (16), Crimson (12), Chartreuse (18), Lightening Medium
- ✓ Pébéo Cerne Relief in the following colours: Black (390), Gold (773)
- ✓ Pébéo Thinner
- ✓ Soft brush
- ✓ Plastic paint palette
- ✓ Kitchen roll
- ✓ Masking tape
- ✓ Double-sided tape
- ✓ Scissors
- ✓ Silicone glue

SOURCE

For information on Pébéo products and stockists, visit www.pebeo.co.uk or call 02380 701144. Card blanks from Craft Creations Ltd, tel: 01992 781900 or visit www.craftcreations.co.uk. Alternatively all materials should be available from any craft shop.