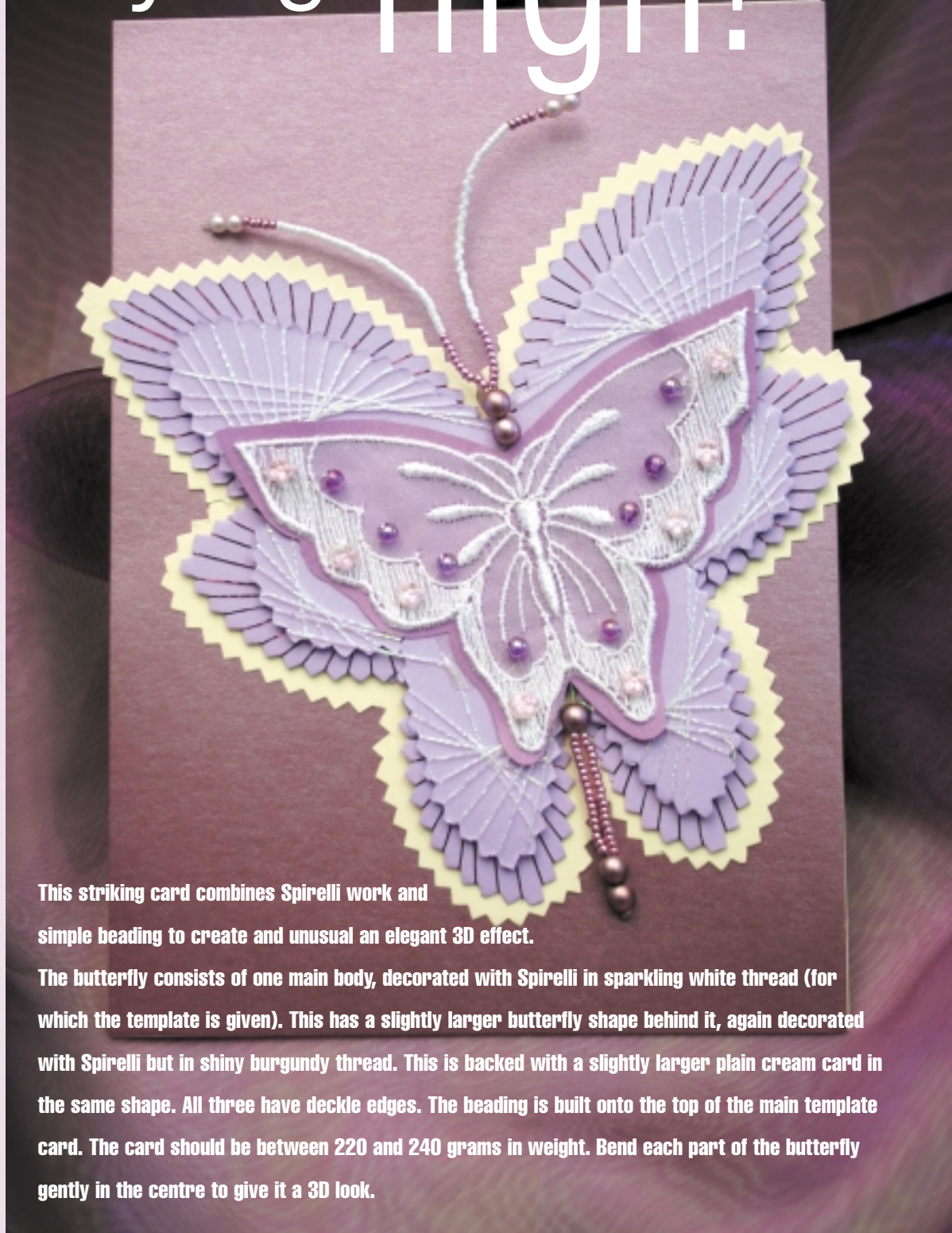


Flying high!

GET READY...

- ✓ Two sheets lilac A4 card
- ✓ One sheet cream A4 card
- ✓ One mauve satin A4 card for base, folded in half
- ✓ One sheet thinner A4 paper in warm deep lilac
- ✓ Sparkling white metallic blending filament ND4 by Nordic Gold
- ✓ Shiny deep burgundy braid No 4 or blending filament both Col 080HL
- ✓ Gütermann satin mauve beads, 6mm Col 5560
- ✓ Gütermann Very pale satin mauve, 4mm Col 5185
- ✓ Mill Hill seed Beads shiny antique pink, No 00553
- ✓ Purple Iris round 4mm Giverny beads (for lace décor)
- ✓ Shiny pearl Delica Beads, No. 202
- ✓ Flower Beads pink Aurora Borealis 3mm (for lace décor)
- ✓ Beading wire 28 gauge
- ✓ Butterfly in lace - wing span at widest point 10.5-11cm
- ✓ Deckle-edged scissors
- ✓ Sharp scissors, sticky tape, glue, double-sided tape.
- ✓ Size 18 tapestry needle and fine sewing needle



This striking card combines Spirelli work and simple beading to create an unusual and elegant 3D effect.

The butterfly consists of one main body, decorated with Spirelli in sparkling white thread (for which the template is given). This has a slightly larger butterfly shape behind it, again decorated with Spirelli but in shiny burgundy thread. This is backed with a slightly larger plain cream card in the same shape. All three have deckle edges. The beading is built onto the top of the main template card. The card should be between 220 and 240 grams in weight. Bend each part of the butterfly gently in the centre to give it a 3D look.

GO

1 Using a piece of A4 lilac card, cut generously around the template using scissors. Trim the edges with deckle-edged scissors as close to the edge as possible. The widest part of the wings should measure approx 12cm.

2 With a size 18 tapestry needle, make a hole as shown on the template in all six places on the wings. Thread needle with about two metres of sparkling white ND4 thread and knot it at the eye of the needle to secure it as

you work. Secure the other end of the thread with sticky tape on the back of the card near the hole and bring the needle up through the hole to the front of the card.

3 Work the butterfly in two halves. Take the thread around the notch nearest the top middle centre of the butterfly and back up through the hole. Take the thread around the next notch and back up through the hole. Continue going around the notches in this way until the top bulge of the wing is complete. Secure the end of the thread with sticky tape and cut off.

4 Work exactly the same for the centre bulge and the lowest bulge. Then complete the other side of the butterfly in exactly the same way.

5 Using the same template, cut a larger butterfly using the A4 lilac card and then cut a deckle edge. The widest part of the wings should measure about 14cm. Work this in Spirelli exactly as for the first butterfly but using the darker shiny burgundy Kreinik blending filament (or thicker braid No. 4) both 080HL.

6 Cut another butterfly shape using the same template on cream A4 card making it slightly larger than the last one at 15cm at the widest point and cut around it with deckle-edge scissors. This is the bottom card and is left plain. Attach all three butterflies together using double-sided tape and position them so the centres of each meet at the middle point.

7 Beading the lower part. Cut 50cm silver 28 gauge beading wire. Make the lower beading first. Thread onto the mid-point of the wire ONE seed bead in 00553 metallic pink, then bend the wire gently in half. This anchors the beads. Add two 6mm satin mauve beads 5560 down both wires. Smooth and spread the wires slightly. You now have a right and left hand wire for the lower body and feelers. Never cut the wires and make sure each side is of fairly equal in length.

8 Thread onto each wire 17 metallic pink seed beads. Bring wires together again and drop a 6mm bead 5560 down them both. The wires are now joined again. Place sticky tape above this bead onto the wire and stick onto the lowest central point of the sparkling white Spirelli butterfly to keep the beads in place. Also tape the two wires onto the centre of the butterfly to secure.

9 Beading the feelers. Bring the wire together again and drop two 6mm beads 5560 down them. Tape the wire under the lower 6mm bead onto the exact centre of the top of same white Spirelli butterfly where all the three cards meet in the middle. This keeps the feeler beads in place and stops them dropping down the card.

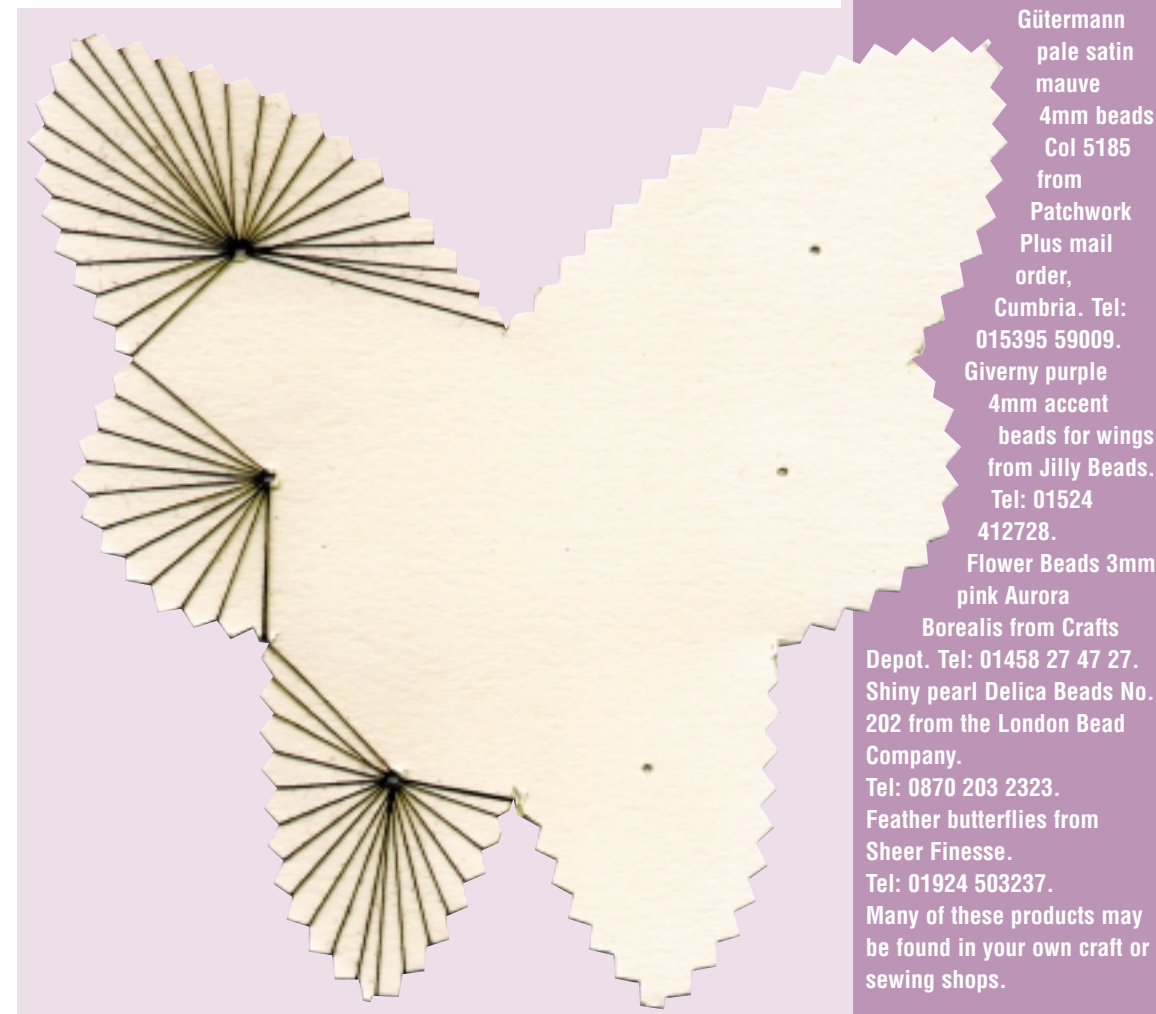
10 The wires now divide, and onto each wire add 10 seed beads in metallic pink, 35 sparkling pearl Delica beads No. 202, five metallic pink seed beads, and onto the top of each feeler two pale satin mauve 4mm 5185 beads. Secure these last beads with strong glue to stop them falling off.

When the lace butterfly and its deep warm lilac paper, or card, are added, the wire work will not show.

11 Any Butterfly centre will work as long as it measures approx 10.5cm across the wings at their widest point. Lace looks nice as it can be decorated with beads as shown in the picture. Feathers also look good, but can't be decorated. Bead the lace butterfly using a very fine white thread that won't show. Shiny beads look best, or use the same ones as for the butterfly centre.

12 Cut a piece of paper or thin card the same shape as the butterfly but larger by 0.5cm all the way round. The card should be a darker and warmer colour for contrast than the other lilac cards. Stick this and the lace butterfly together with double-sided tape. Then stick the two onto the deckle-edged butterflies and your beautiful card is ready to fly away! ^{Mc}

tips: The centre of this butterfly card is a decorated lace butterfly, but a feather butterfly can look stunning. Sheer Finesse have a wonderful selection of butterflies in real feathers that could replace the lace for those who prefer not to sew beads on. Tel 01924-503237 or visit the website. Always cut the pieces of card slightly larger than you need them. They can be cut down afterwards with the deckle-edge scissors. Experiment with Spirelli and colours and try making up your own colours and designs.



TECHNIQUE:
Spirelli and beading

SKILL LEVEL:
Moderate ●●○

MAKE IT
in a weekend

CREATED BY
Jenny Lewis and
Vikki Owens

SOURCE

All supplies except the following are available from Emsbay Crafts. Tel: 01756 700946
Lace butterfly from Fripperies. Tel: 01955 611445.
Gütermann satin mauve 6mm beads Col 5560 and

Gütermann pale satin mauve 4mm beads Col 5185 from Patchwork Plus mail order, Cumbria. Tel: 015395 59009.
Giverny purple 4mm accent beads for wings from Jilly Beads. Tel: 01524 412728.
Flower Beads 3mm pink Aurora Borealis from Crafts Depot. Tel: 01458 27 47 27.
Shiny pearl Delica Beads No. 202 from the London Bead Company. Tel: 0870 203 2323.
Feather butterflies from Sheer Finesse. Tel: 01924 503237.
Many of these products may be found in your own craft or sewing shops.